

Cam switches

Complete switches, 12 and 20 A

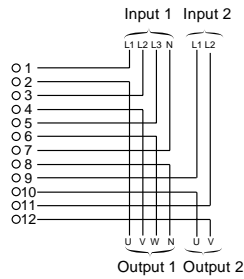
Front mounting, "multi-fixing" or by Ø 22 mm hole

With 45 x 45 mm front plate, 35 mm handle and metallic legend with black marking

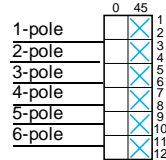
Switches with 45° switching angle



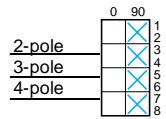
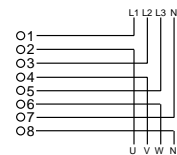
K00 0000LH



K00 0000CH



Switches with 90° switching angle



Wiring diagram and switching programme	Marking and switch position	Front mounting method	Number of poles	Thermal current (Ith)	Reference	Weight			
				A		kg			
		"Multi-fixing"	1	12	K1A 001ALH	0.103			
				20	K2A 001ALH	0.103			
			2	12	K1B 002ALH	0.113			
				20	K2B 002ALH	0.113			
			3	12	K1C 003ALH	0.133			
				20	K2C 003ALH	0.133			
			4	12	K1D 004ALH	0.138			
				20	K2D 004ALH	0.138			
			5	12	K1E 005ALH	0.158			
				20	K2E 005ALH	0.158			
			6	12	K1F 006ALH	0.168			
				20	K2F 006ALH	0.168			
		By Ø 22 mm hole	1	12	K1A 001ACH	0.123			
				20	K2A 001ACH	0.123			
			2	12	K1B 002ACH	0.133			
				20	K2B 002ACH	0.133			
			3	12	K1C 003ACH	0.153			
				20	K2C 003ACH	0.153			
			4	12	K1D 004ACH	0.158			
				20	K2D 004ACH	0.158			
			5	12	K1E 005ACH	0.178			
				20	K2E 005ACH	0.178			
			6	12	K1F 006ACH	0.188			
				20	K2F 006ACH	0.188			
		"Multi-fixing"	2	12	K1B 1002HLH	0.130			
				20	K2B 1002HLH	0.130			
			3	12	K1C 003HLH	0.135			
				20	K2C 003HLH	0.135			
			4	12	K1D 004HLH	0.140			
				20	K2D 004HLH	0.140			
					By Ø 22 mm hole	2	12	K1B 1002HCH	0.150
							20	K2B 1002HCH	0.150
						3	12	K1C 003HCH	0.155
							20	K2C 003HCH	0.155
						4	12	K1D 004HCH	0.160
							20	K2D 004HCH	0.160

Cam switches

Complete switches, 12 and 20 A

Front mounting, "multi-fixing" or by Ø 22 mm hole

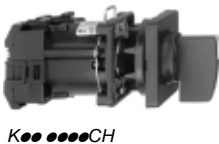
With 45 x 45 mm front plate, 35 mm handle and metallic legend with black marking

ON-OFF switches with spring return from 30° to "0" position



Wiring diagram and switching programme	Marking and switch position	Front mounting method	Number of poles	Thermal current (Ith)	Reference	Weight
				A		kg
 	 	"Multi-fixing"	1	12	K1A 002TLH	0.105
				20	K2A 002TLH	0.105
		By Ø 22 mm hole	1	12	K1A 002TCH	0.125
				20	K2A 002TCH	0.125

OFF-ON switches with spring return from 30° to "0" position



 	 	"Multi-fixing"	1	12	K1A 001TLH	0.105
				20	K2A 001TLH	0.105
		By Ø 22 mm hole	1	12	K1A 001TCH	0.125
				20	K2A 001TCH	0.125

Cam switches

Complete switches, 12 and 20 A

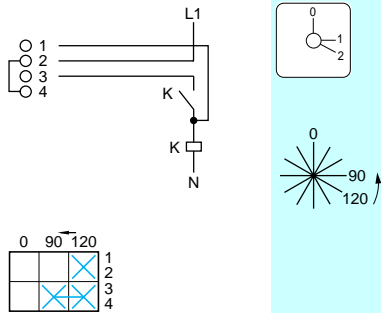
Front mounting, "multi-fixing" or by Ø 22 mm hole

With 45 x 45 mm front plate, 35 mm handle and metallic legend with black marking

OFF-ON switches with spring return from 120° to 90°



K1B 003LH

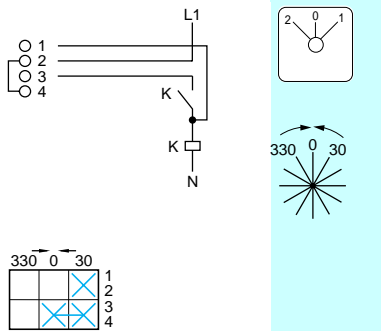


Front mounting method	Number of poles	Thermal current (Ith) A	Reference	Weight kg
"Multi-fixing"	1	12	K1B 003TLH	0.115
		20	K2B 003TLH	0.115
By Ø 22 mm hole	1	12	K1B 003TCH	0.135
		20	K2B 003TCH	0.135

OFF-ON switches with spring return from 30° and from 330° to "0" position



K1B 004CH



Front mounting method	Number of poles	Thermal current (Ith) A	Reference	Weight kg
"Multi-fixing"	1	12	K1B 004TLH	0.115
		20	K2B 004TLH	0.115
By Ø 22 mm hole	1	12	K1B 004TCH	0.135
		20	K2B 004TCH	0.135

Cam switches

Complete switches, 12 and 20 A

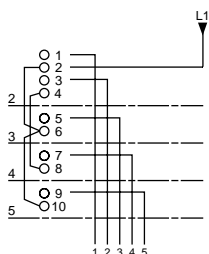
Front mounting, "multi-fixing" or by Ø 22 mm hole

With 45 x 45 mm front plate, 35 mm handle and metallic legend with black marking

Stepping switches (2 to 5 step), single-pole, with "0" position



K00 0000LH



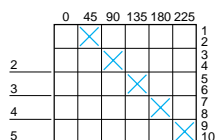
"Multi-fixing"

By Ø 22 mm hole

Thermal current (Ith)	Reference	Weight
2 step + "0"		
12	K1B 002QLH	0.115
20	K2B 002QLH	0.115
12	K1B 002QCH	0.135
20	K2B 002QCH	0.135



K00 0000CH



"Multi-fixing"

By Ø 22 mm hole

3 step + "0"		
12	K1C 003QLH	0.135
20	K2C 003QLH	0.135
12	K1C 003QCH	0.155
20	K2C 003QCH	0.155



"Multi-fixing"

By Ø 22 mm hole

4 step + "0"		
12	K1D 004QLH	0.140
20	K2D 004QLH	0.140
12	K1D 004QCH	0.160
20	K2D 004QCH	0.160



"Multi-fixing"

By Ø 22 mm hole

5 step + "0"		
12	K1E 005QLH	0.160
20	K2E 005QLH	0.160
12	K1E 005QCH	0.180
20	K2E 005QCH	0.180

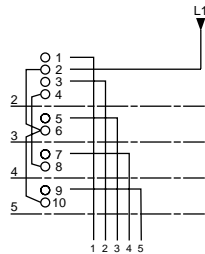
Cam switches

Complete switches, 12 and 20 A

Front mounting, "multi-fixing" or by Ø 22 mm hole

With 45 x 45 mm front plate, 35 mm handle and metallic legend with black marking

Stepping switches (2 to 5 step), single-pole, without "0" position



"Multi-fixing"

By Ø 22 mm hole

Thermal current (Ith)

A

2 step

12

Reference

K1B 002NLH

Weight

0.115

20

K2B 002NLH

0.115

12

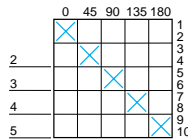
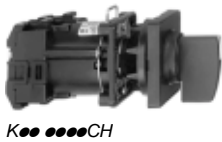
K1B 002NCH

0.135

20

K2B 002NCH

0.135



"Multi-fixing"

By Ø 22 mm hole

3 step

12

K1C 003NLH

0.135

20

K2C 003NLH

0.135

12

K1C 003NCH

0.155

20

K2C 003NCH

0.155



"Multi-fixing"

By Ø 22 mm hole

4 step

12

K1D 004NLH

0.140

20

K2D 004NLH

0.140

12

K1D 004NCH

0.160

20

K2D 004NCH

0.160



"Multi-fixing"

By Ø 22 mm hole

5 step

12

K1E 005NLH

0.160

20

K2E 005NLH

0.160

12

K1E 005NCH

0.180

20

K2E 005NCH

0.180



Cam switches

Complete switches, 12 and 20 A

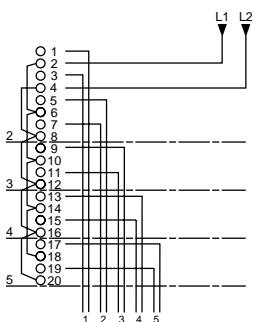
Front mounting, "multi-fixing" or by Ø 22 mm hole

With 45 x 45 mm front plate, 35 mm handle and metallic legend with black marking

Stepping switches (2 to 5 step), 2-pole, with "0" position



K00 0000LH



"Multi-fixing"

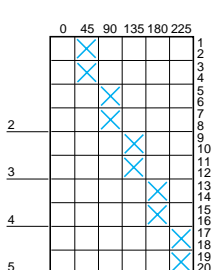
By Ø 22 mm hole



Thermal current (Ith)	Reference	Weight
2 step + "0"		
12	K1D 012QLH	0.140
20	K2D 012QLH	0.140
12	K1D 012QCH	0.160
20	K2D 012QCH	0.160



K00 0000CH



"Multi-fixing"

By Ø 22 mm hole



3 step + "0"		
12	K1F 013QLH	0.170
20	K2F 013QLH	0.170
12	K1F 013QCH	0.190
20	K2F 013QCH	0.190



"Multi-fixing"

By Ø 22 mm hole



4 step + "0"		
12	K1H 014QLH	0.195
20	K2H 014QLH	0.195
12	K1H 014QCH	0.215
20	K2H 014QCH	0.215



"Multi-fixing"

By Ø 22 mm hole



5 step + "0"		
12	K1K 015QLH	0.225
20	K2K 015QLH	0.225
12	K1K 015QCH	0.245
20	K2K 015QCH	0.245

Cam switches

Complete switches, 12 and 20 A

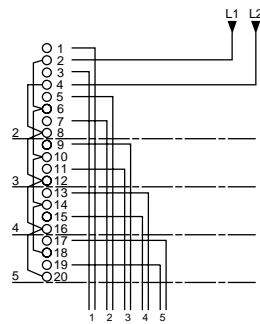
Front mounting, "multi-fixing" or by Ø 22 mm hole

With 45 x 45 mm front plate, 35 mm handle and metallic legend with black marking

Stepping switches (2 to 5 step), 2-pole, without "0" position



K00 0000LH



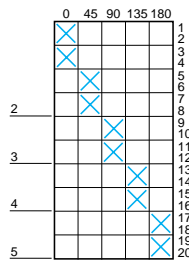
"Multi-fixing"

By Ø 22 mm hole

Thermal current (Ith)	Reference	Weight (kg)
2 step		
12	K1D 012NLH	0.140
20	K2D 012NLH	0.140
12	K1D 012NCH	0.160
20	K2D 012NCH	0.160



K00 0000CH



"Multi-fixing"

By Ø 22 mm hole

Thermal current (Ith)	Reference	Weight (kg)
3 step		
12	K1F 013NLH	0.170
20	K2F 013NLH	0.170
12	K1F 013NCH	0.190
20	K2F 013NCH	0.190



"Multi-fixing"

By Ø 22 mm hole

Thermal current (Ith)	Reference	Weight (kg)
4 step		
12	K1H 014NLH	0.195
20	K2H 014NLH	0.195
12	K1H 014NCH	0.215
20	K2H 014NCH	0.215



"Multi-fixing"

By Ø 22 mm hole

Thermal current (Ith)	Reference	Weight (kg)
5 step		
12	K1K 015NLH	0.225
20	K2K 015NLH	0.225
12	K1K 015NCH	0.245
20	K2K 015NCH	0.245

Cam switches

Complete switches, 12 and 20 A

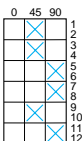
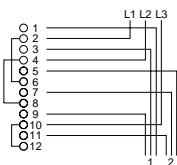
Front mounting, "multi-fixing" or by Ø 22 mm hole

With 45 x 45 mm front plate, 35 mm handle and metallic legend with black marking

Stepping switches (2 and 3 step), 3-pole, with "0" position



K1F 022QLH



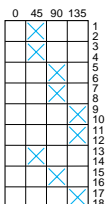
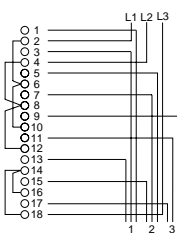
"Multi-fixing"

By Ø 22 mm hole

Thermal current (Ith)	Reference	Weight
2 step + "0"		
A		kg
12	K1F 022QLH	0.170
20	K2F 022QLH	0.170
12	K1F 022QCH	0.190
20	K2F 022QCH	0.190



K1I 023QLH



"Multi-fixing"

By Ø 22 mm hole

Thermal current (Ith)	Reference	Weight
3 step + "0"		
A		kg
12	K1I 023QLH	0.215
20	K2I 023QLH	0.215
12	K1I 023QCH	0.235
20	K2I 023QCH	0.235

Cam switches

Complete switches, 12 and 20 A

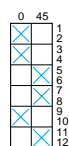
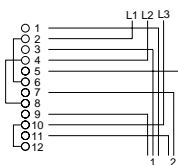
Front mounting, "multi-fixing" or by Ø 22 mm hole

With 45 x 45 mm front plate, 35 mm handle and metallic legend

Stepping switches (2 and 3 step), 3-pole, without "0" position



K1F 022NLH



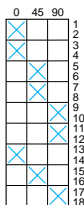
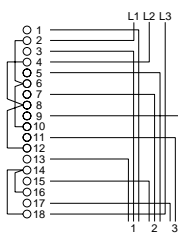
"Multi-fixing"

By Ø 22 mm hole

Thermal current (Ith)	Reference	Weight
2 step		
12	K1F 022NLH	0.170
20	K2F 022NLH	0.170
12	K1F 022NCH	0.190
20	K2F 022NCH	0.190



K1F 023NLH



"Multi-fixing"

By Ø 22 mm hole

Thermal current (Ith)	Reference	Weight
3 step		
12	K11 023NLH	0.215
20	K21 023NLH	0.215
12	K11 023NCH	0.235
20	K21 023NCH	0.235

Cam switches

Complete switches, 12 and 20 A

Front mounting, "multi-fixing" or by Ø 22 mm hole

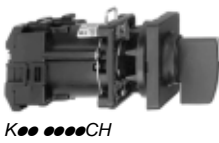
With 45 x 45 mm front plate, 35 mm handle and metallic legend with black marking

Reversing switches with spring return from 315° and from 45° to "0" position



Wiring diagram and switching programme	Marking and switch position	Front mounting method	Number of poles	Thermal current (Ith)	Reference	Weight
		"Multi-fixing"	1	12	K1B 006TLH	0.115
				20	K2B 006TLH	0.115
		By Ø 22 mm hole	1	12	K1B 006TCH	0.135
				20	K2B 006TCH	0.135

Changeover switches, 1 to 4-pole



Wiring diagram and switching programme	Marking and switch position	Front mounting method	Number of poles	With "0" position			
				Thermal current (Ith)	Reference		
		"Multi-fixing"	1	12	K1B 001ULH	0.115	
				20	K2B 001ULH	0.115	
			2	12	K1D 002ULH	0.140	
				20	K2D 002ULH	0.140	
			3	12	K1F 003ULH	0.170	
				20	K2F 003ULH	0.170	
			4	12	K1H 004ULH	0.195	
				20	K2H 004ULH	0.195	
			By Ø 22 mm hole	1	12	K1B 001UCH	0.135
					20	K2B 001UCH	0.135
			2	12	K1D 002UCH	0.160	
				20	K2D 002UCH	0.160	
			3	12	K1F 003UCH	0.190	
				20	K2F 003UCH	0.190	
			4	12	K1H 004UCH	0.215	
				20	K2H 004UCH	0.215	
		"Multi-fixing"	1	Without "0" position			
				12	K1B 011ULH	0.115	
			2	12	K2B 011ULH	0.115	
				20	K1D 012ULH	0.140	
			3	12	K2D 012ULH	0.140	
				20	K1F 013ULH	0.170	
			4	12	K2F 013ULH	0.170	
				20	K1H 014ULH	0.195	
			By Ø 22 mm hole	1	12	K1B 011UCH	0.135
					20	K2B 011UCH	0.135
			2	12	K1D 012UCH	0.160	
				20	K2D 012UCH	0.160	
			3	12	K1F 013UCH	0.190	
				20	K2F 013UCH	0.190	
			4	12	K1H 014UCH	0.215	
				20	K2H 014UCH	0.215	

Cam switches

Complete switches, 12 A

Front mounting, "multi-fixing" or by Ø 22 mm hole

With 45 x 45 mm front plate, 35 mm handle and metallic legend with black marking

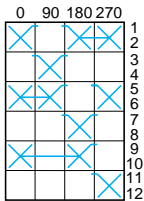
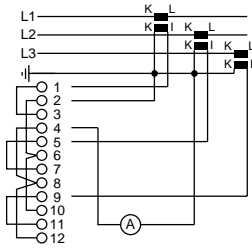
Ammeter switches

Wiring diagram and switching programme	Marking and switch position	Front mounting method	Thermal current (Ith)	Reference	Weight
			A		kg

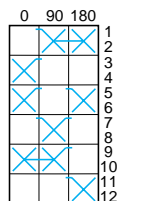
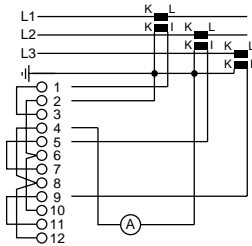
For 3 circuits



K1F 003MLH



K1F 003MCH



	With "0" position		
"Multi-fixing"	12	K1F 003MLH	0.170

By Ø 22 mm hole	12	K1F 003MCH	0.190
-----------------	----	------------	-------

	Without "0" position		
"Multi-fixing"	12	K1F 013MLH	0.170

By Ø 22 mm hole	12	K1F 013MCH	0.190
-----------------	----	------------	-------

Cam switches

Complete switches, 12 A

Front mounting, "multi-fixing" or by Ø 22 mm hole

With 45 x 45 mm front plate, 35 mm handle and metallic legend

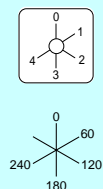
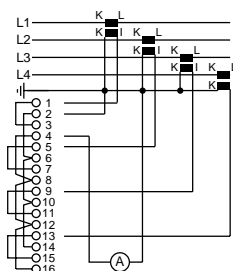
Ammeter switches (continued)

Wiring diagram and switching programme	Marking and switch position	Front mounting method	Thermal current (Ith)	Reference	Weight
			A		kg

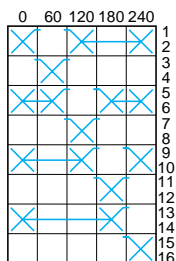
For 4 circuits



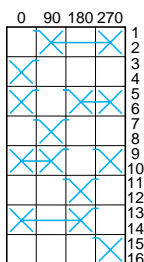
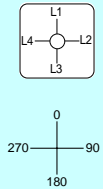
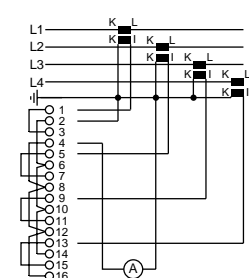
K00 0000LH



K00 0000CH



	With "0" position		
"Multi-fixing"	12	K1H 004MLH	0.195
By Ø 22 mm hole	12	K1H 004MCH	0.215



	Without "0" position		
"Multi-fixing"	12	K1H 014MLH	0.195
By Ø 22 mm hole	12	K1H 014MCH	0.215

Cam switches

Complete switches, 12 A

Front mounting, "multi-fixing" or by Ø 22 mm hole

With 45 x 45 mm front plate, 35 mm handle and metallic legend with black marking

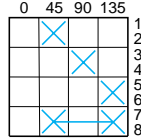
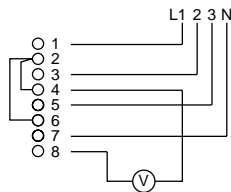
Voltmeter switches

Wiring diagram	Switching programme	Marking and switch position	Front mounting method	Thermal current (Ith)	Reference	Weight
			A			kg

For measurements between 3 phases and neutral



K00 0000LH



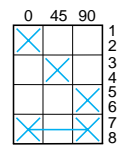
With "0" position			
"Multi-fixing"	12	K1D 023MLH	0.140



By Ø 22 mm hole	12	K1D 023MCH	0.160
-----------------	----	------------	-------



K00 0000CH

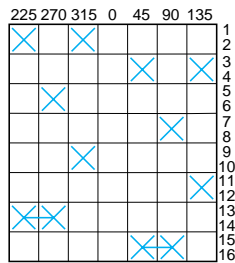
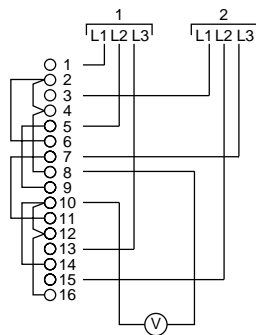


Without "0" position			
"Multi-fixing"	12	K1D 033MLH	0.140



By Ø 22 mm hole	12	K1D 033MCH	0.160
-----------------	----	------------	-------

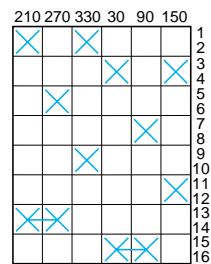
For measurements between 3 phases of 2 supplies



With "0" position			
"Multi-fixing"	12	K1H 026MLH	0.205



By Ø 22 mm hole	12	K1H 026MCH	0.215
-----------------	----	------------	-------



Without "0" position			
"Multi-fixing"	12	K1H 036MLH	0.205



By Ø 22 mm hole	12	K1H 036MCH	0.215
-----------------	----	------------	-------

Cam switches

Complete switches, 12 A

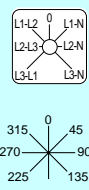
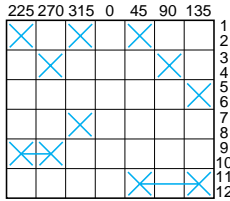
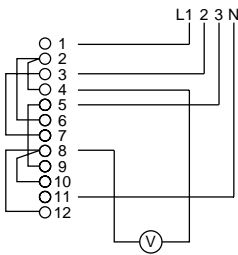
Front mounting, "multi-fixing" or by Ø 22 mm hole

With 45 x 45 mm front plate, 35 mm handle and metallic legend with black marking

Voltmeter switches (continued)

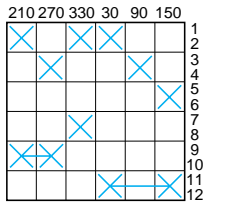
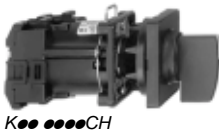
Wiring diagram	Switching programme	Marking and switch position	Front mounting method	Thermal current (Ith)	Reference	Weight
A						
kg						

For measurements between 3 phases and between each of the 3 phases and neutral



With "0" position		
"Multi-fixing"	12	K1F 027MLH 0.170

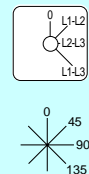
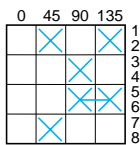
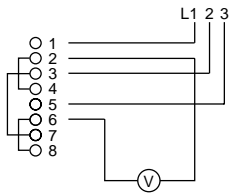
By Ø 22 mm hole	12	K1F 027MCH 0.190
-----------------	----	------------------



Without "0" position		
"Multi-fixing"	12	K1F 037MLH 0.170

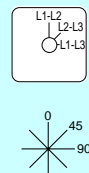
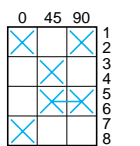
By Ø 22 mm hole	12	K1F 037MCH 0.190
-----------------	----	------------------

For measurements between 3 phases



With "0" position		
"Multi-fixing"	12	K1D 024MLH 0.140

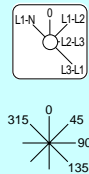
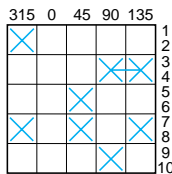
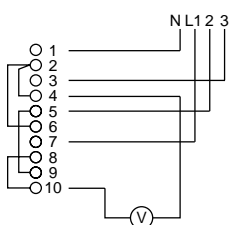
By Ø 22 mm hole	12	K1D 024MCH 0.160
-----------------	----	------------------



Without "0" position		
"Multi-fixing"	12	K1D 034MLH 0.140

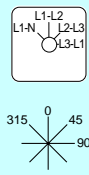
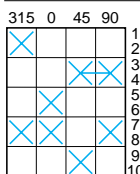
By Ø 22 mm hole	12	K1D 034MCH 0.160
-----------------	----	------------------

For measurements between 3 phases and between 1 phase and neutral



With "0" position		
"Multi-fixing"	12	K1E 025MLH 0.160

By Ø 22 mm hole	12	K1E 025MCH 0.180
-----------------	----	------------------



Without "0" position		
"Multi-fixing"	12	K1E 035MLH 0.160

By Ø 22 mm hole	12	K1E 035MCH 0.180
-----------------	----	------------------